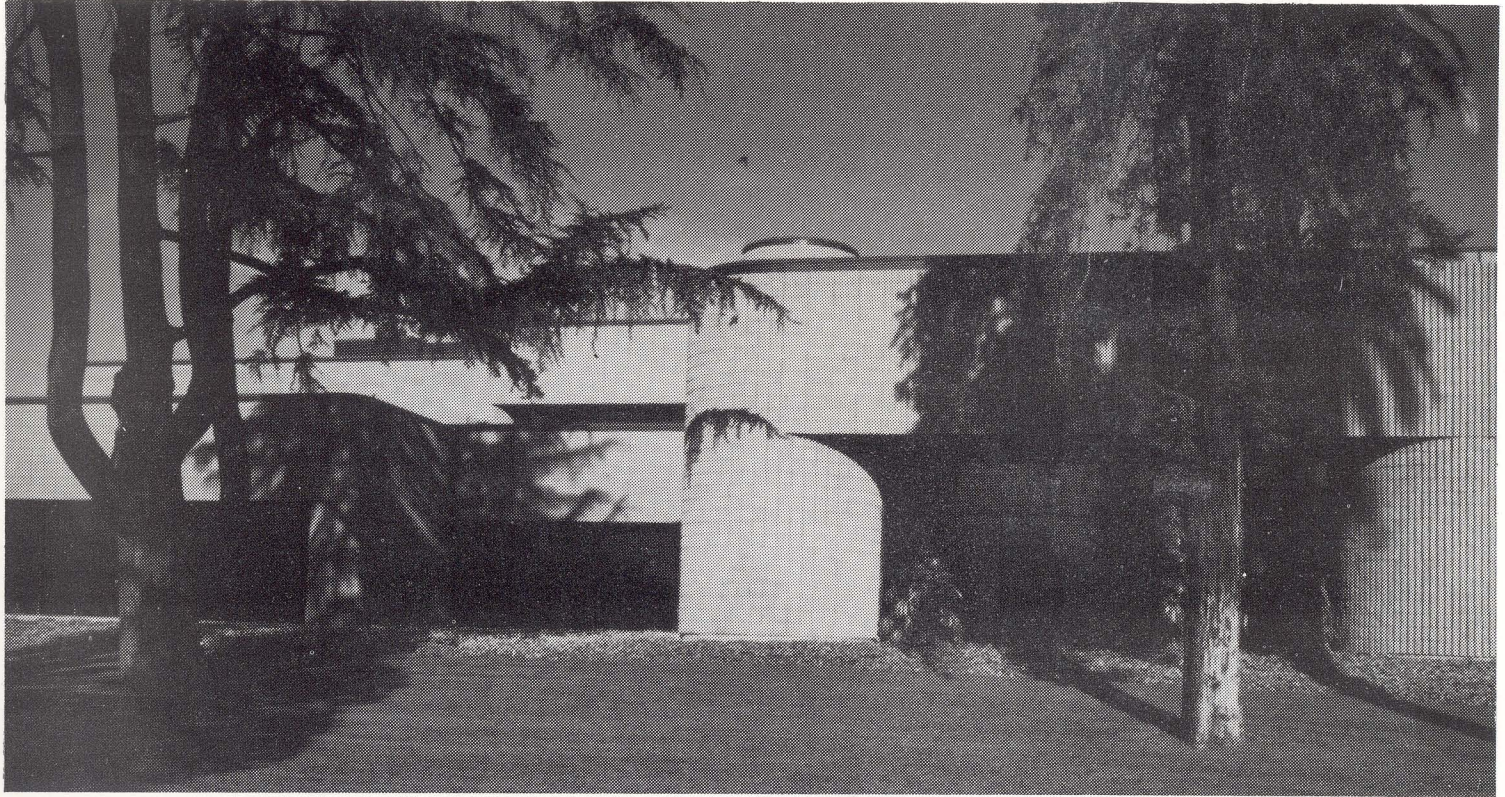




VILLANUEVA / ARNONI ARCHITECTS

Norman T. Feldhym Central Library



The Norman T. Feldhym Central Library was designed to complement and blend a major public building into an historic existing park in downtown San Bernardino.

"We wanted to preserve and enhance the sense of community place here, keeping all the healthy trees possible," say architects Gregory Villanueva AIA and Oscar Arnoni AIA.

Besides preserving urban greenpeace and enriching the elements of architectural forms with human scale and proportion, the masonry veneered edifice is extremely energy efficient.

The sculptural architectural massing is boldly stated in scored split-faced fluted masonry. The light color of the roughly textured block provides a rich serene, constantly changing background for the mature park trees.

"The curved masonry planes, outlined with the crisp black band, creates a softened effect with the natural surroundings. The balance of the masses, both inside and out, create an excellent proportion with the park," says Arnoni. The curved masonry planes were turned with half fluted units in lieu of manufacturing special units. The roughly textured masonry units provided the building covering with a low maintenance finish at a very economical price.

An open court yard in the center of the library as well as the community browsing area are illuminated by solar controlled skylights.

The Feldhym Library includes a 200 seat multi-purpose room for movies, conferences and lectures. The ground floor level contains the browsing area, circulation area, business and reference area, children's library, theater and outside play area. The second floor houses the California Room, for rare volumes, the administration area and one of the finest computer laboratories in the country.

Owner: San Bernardino City

Architect: Villanueva/Arnoni Architects

Structural Engineer: Johnson & Neilsen Associates

Construction Management: J.D. Diffenbaugh, Inc.

Masonry Contractor: Winegardner Masonry, Inc.

Concrete masonry units: Orco Block Co., Inc.

Constructed: 1985

Building size: 64,000 square feet

Masonry units: Fluted split face veneer units

Building cost: \$5,273,000.00

Masonry cost: \$289,000.00

Cost of masonry per square feet of floor: \$4.52

Percentage of cost for masonry: 5.5%

Constructed by a signatory masonry contractor using members of Bricklayers & Allied Craftsmen Union Locals 2, 13, 20 & 22.

MASONRY INSTITUTE OF AMERICA

2550 Beverly Boulevard
Los Angeles, CA 90057
(213) 388-0472

MASONRY INSTITUTE OF THE INLAND EMPIRE

195 E. Foothill Boulevard
Rialto, CA 92376
(714) 875-2250

COUNTY OF ORANGE MASONRY PROMOTION

980 West 17th Street
Santa Ana, CA 92706
(714) 547-4451

